



54/12614001/0816

## Directions for use

Read carefully!

# 50% Glucose Injection B.P.

### Composition

100 ml of solution contain

#### Active ingredients:

Glucose Monohydrate for Parenteral Use 55.0 g

#### Excipients:

Water for injections

Caloric value: 850 kJ/100 ml  $\triangleq$  200 kcal/100 ml

Theoretical osmolarity 2770 mOsm/l

Titration acidity (to pH 7.4) < 1.5 mmol/l

pH 3.5 – 5.5

### Pharmaceutical form

Concentrate for infusion

### Pharmaco-therapeutic group

Solution for energy supply

### Indications

Therapy of hypoglycaemia.

### Contraindications

Hyperglycaemia;

Hypokalaemia;

Acidosis.

### Precautions for use

Blood glucose concentrations should be monitored, depending on metabolic conditions and administered dose.

Glucose injections should not be administered through the same infusion equipment, simultaneously with, before, or after administration of blood, because of the possibility of pseudo-agglutination.

### Interactions

Because of its acid pH, 50% Glucose Injection B.P. may be incompatible with other medications.

### Dosage

The dosage should be adjusted according to the actual blood glucose concentration.

### Method of administration

Only to be used as additive to intravenous infusions in order to avoid vein irritation.

### Overdose

Overdose may cause hyperglycaemia, glucosuria, serum hyperosmolarity, possibly leading to hyperosmotic and hyperglycaemic coma, further hyperhydration and electrolyte disorders.

The primary therapy is dose reduction. Disorders of the glucose metabolism and of the electrolyte balance can be corrected by administration of insulin and appropriate supplementation of electrolytes.

### Undesirable effects

If the product is used in accordance with the directions given, the occurrence of side effects is not to be expected.

**Note:** Patients are advised to inform their doctor or pharmacist of any adverse effect they experience in connection with the administration of this drug.

### Usage during pregnancy

Safety in pregnancy has not been established. Use only when clearly needed and potential benefits outweigh risk to the foetus.

schwarz

Dokument = 148 x 210 mm  
DIN A5 – 2 Seiten

LK\_\_54  
50% Glucose Injection B.P.  
GIF (MPc, MPw)  
54/12614001/0816  
Standort Penang

Lätus



8478

Font size: 9 pt.

G 121296





54/12614001/0816

### Storage

Do not store above 25°C.

### Shelf life

The product must not be used beyond the expiry date stated on the label.

### Presentation

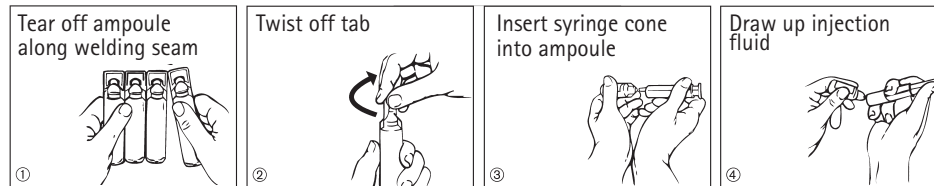
In plastic ampoules "Mini-Plasco®" and "Mini-Plasco® Connect" of 10 ml, 20 ml in box of 20's.

### Instructions for use/handling

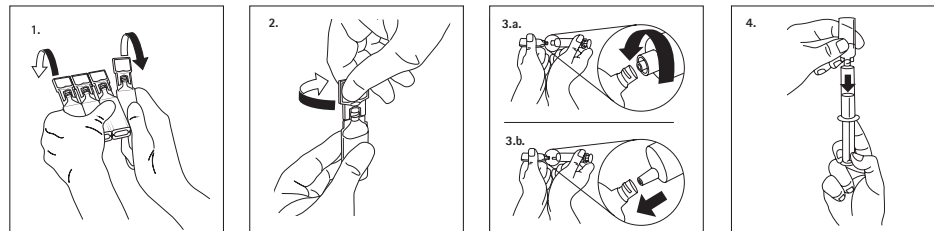
The product is supplied in single-dose containers. Remaining contents must not be stored for later use.

Only to be used if solution is clear and container undamaged.

#### Mini-Plasco® Handling



#### Mini-Plasco® Connect Handling



**B | BRAUN**

Manufactured by:  
**B. Braun Medical  
Industries Sdn. Bhd.**  
(Company No.  
19051-M)  
11900 Bayan Lepas,  
Penang, Malaysia.

